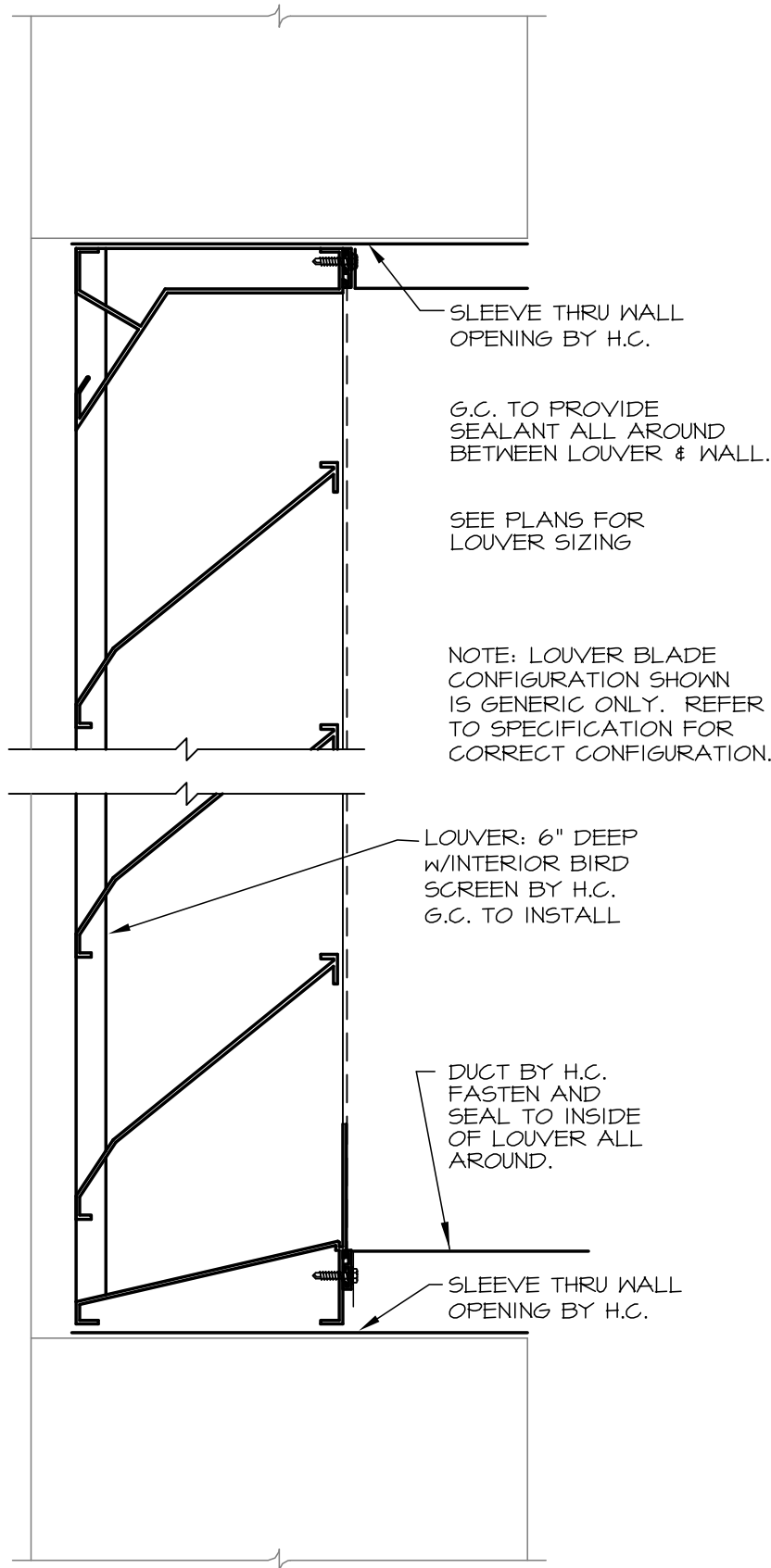


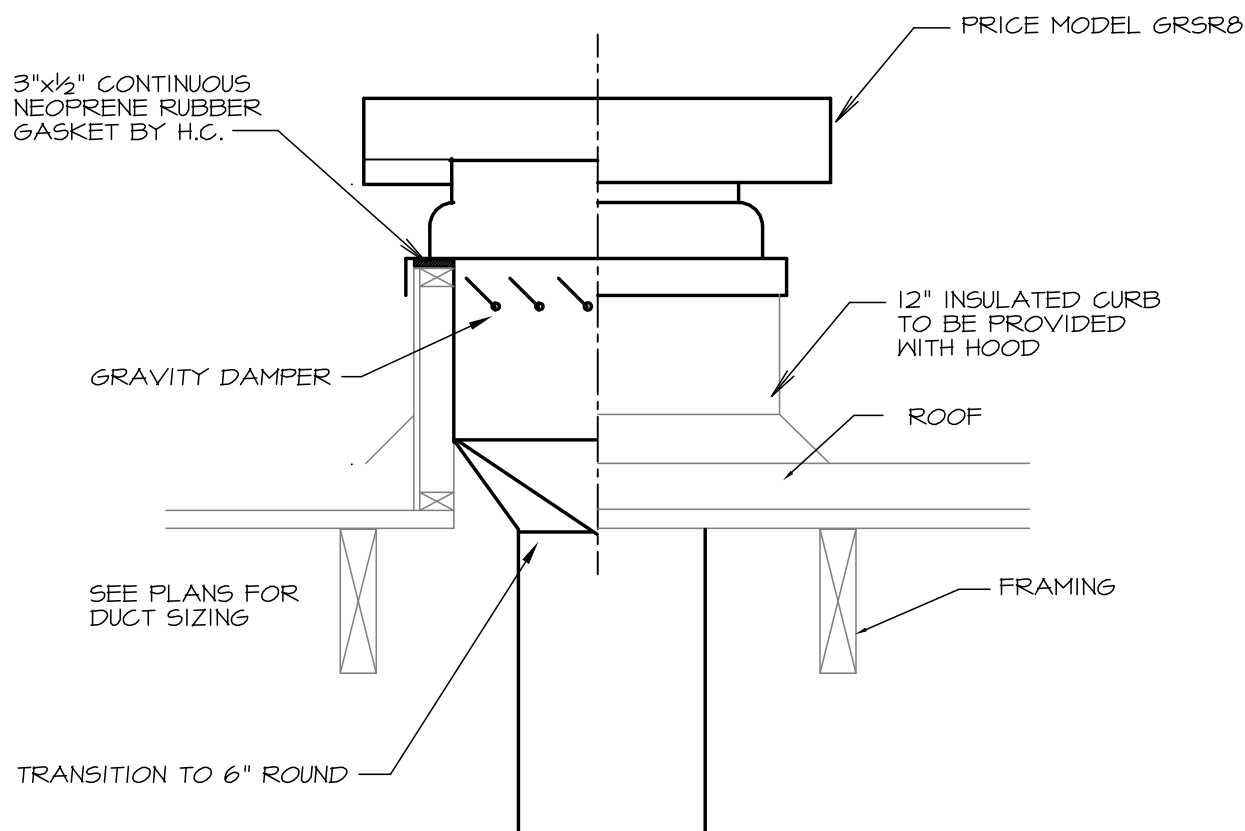


Reviewed for Code Compliance
Inspection/Division
Approved with Conditions

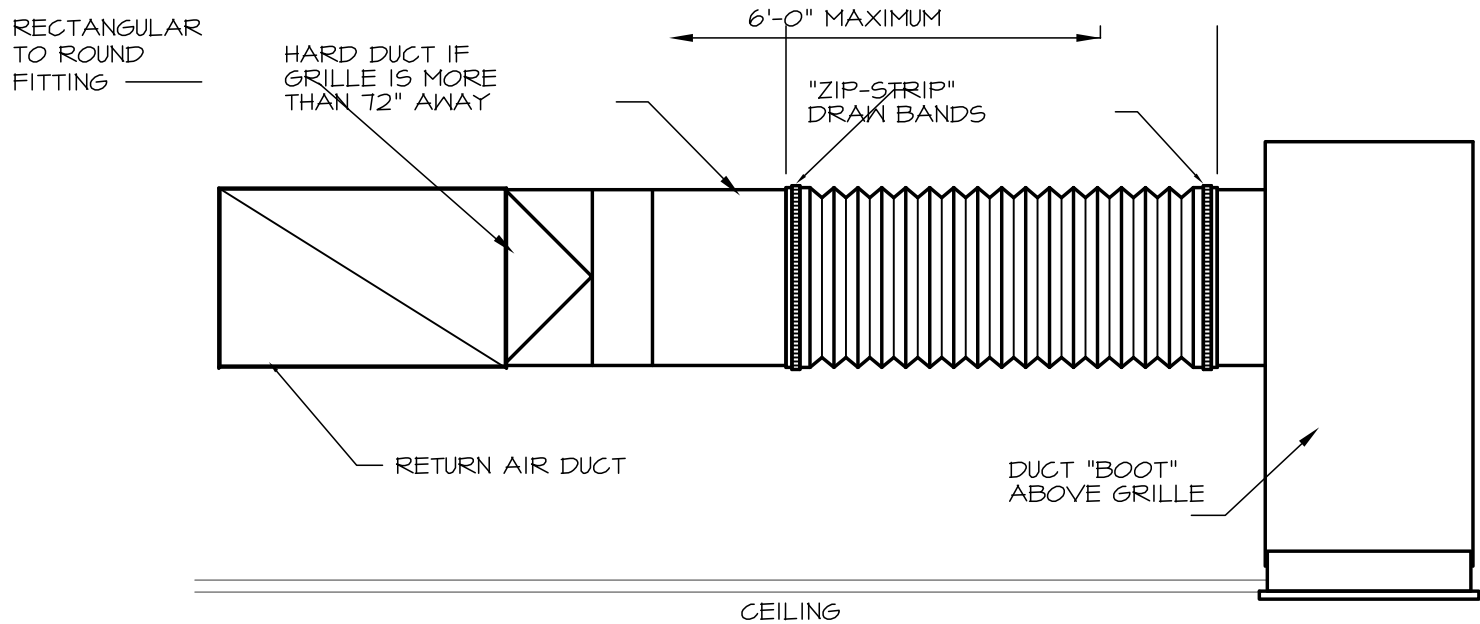
Date: 05/16/14



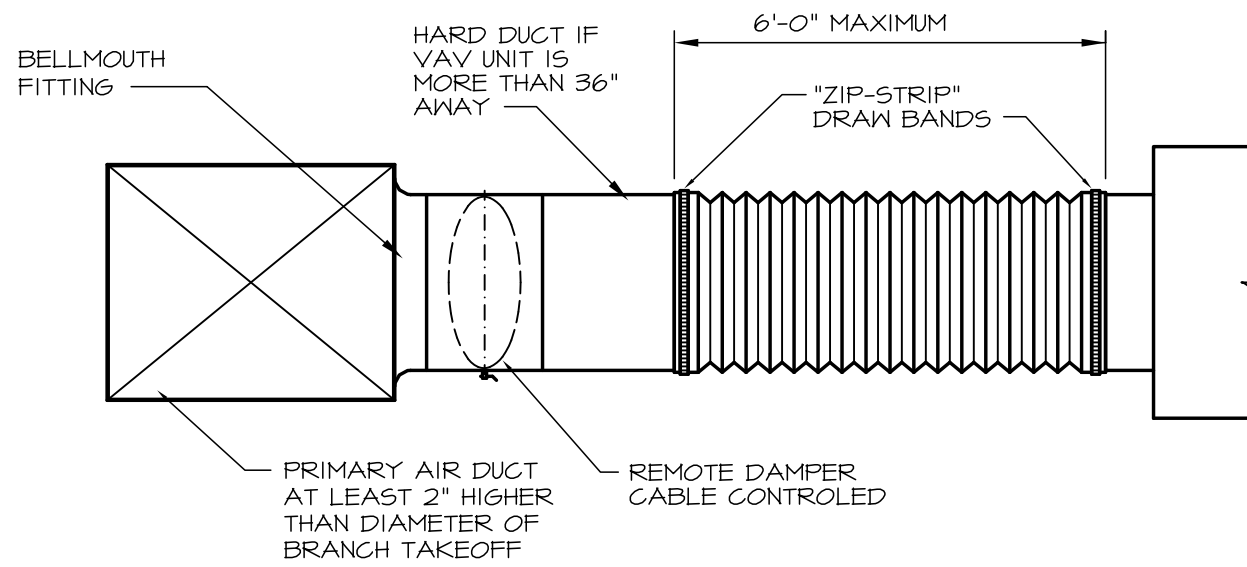
1 **EXTERIOR LOUVER DETAIL**
NO SCALE



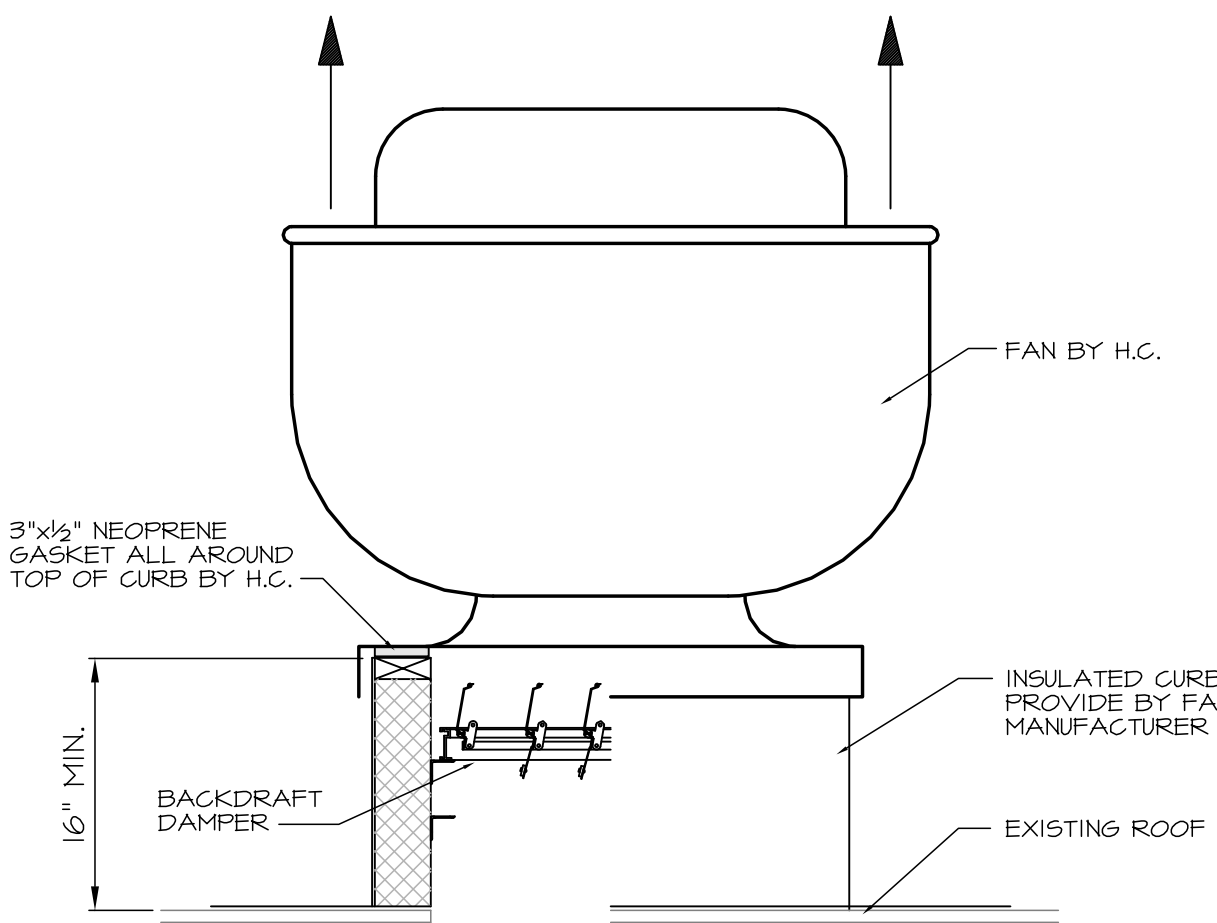
2 **ROOF RELIEF HOOD**
NO SCALE



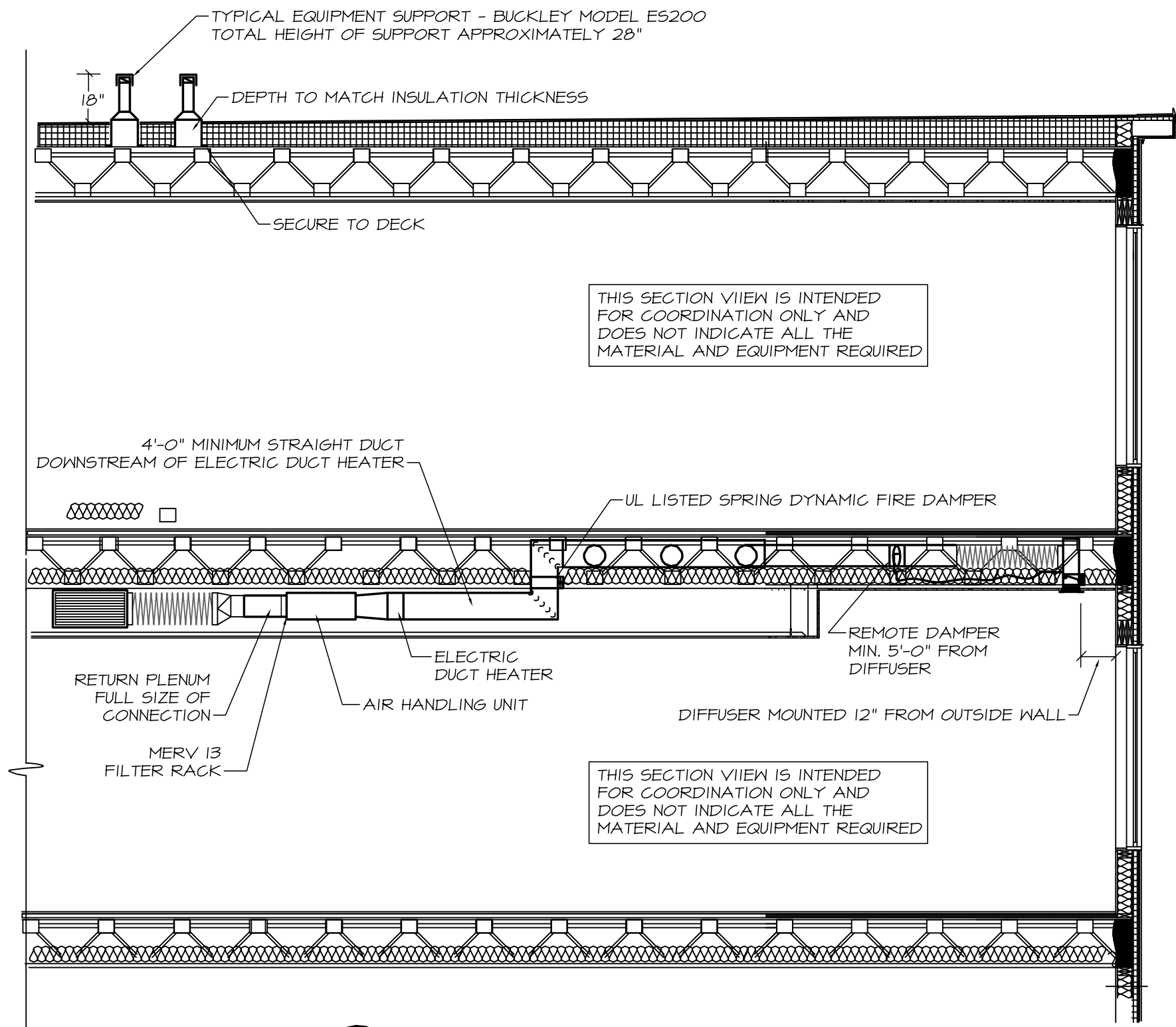
3 **FLEXIBLE DUCT & RETURN GRILLE CONNECTION**
NO SCALE



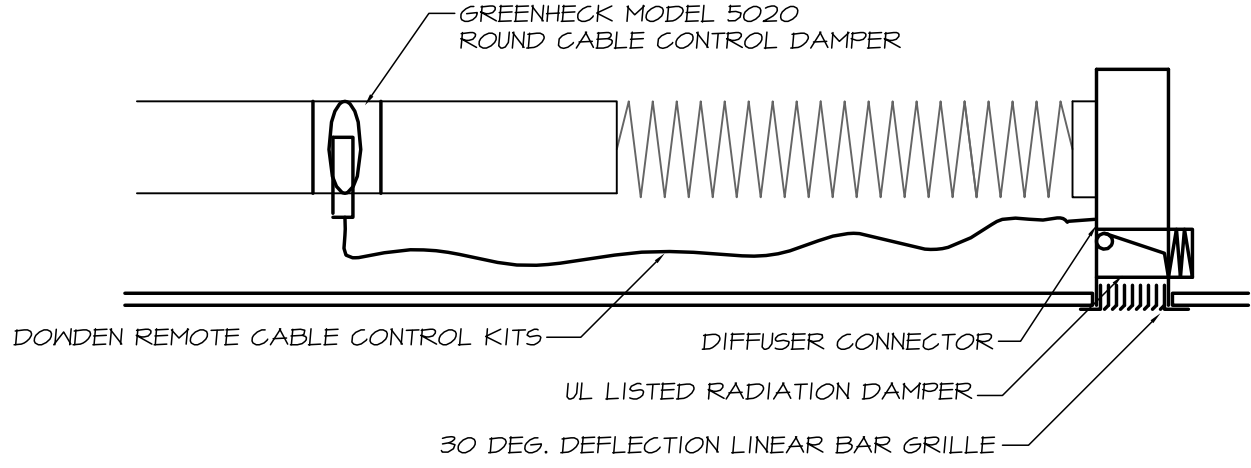
4 **FLEXIBLE DUCT CONNECTION TO SUPPLY OUTLET**
NO SCALE



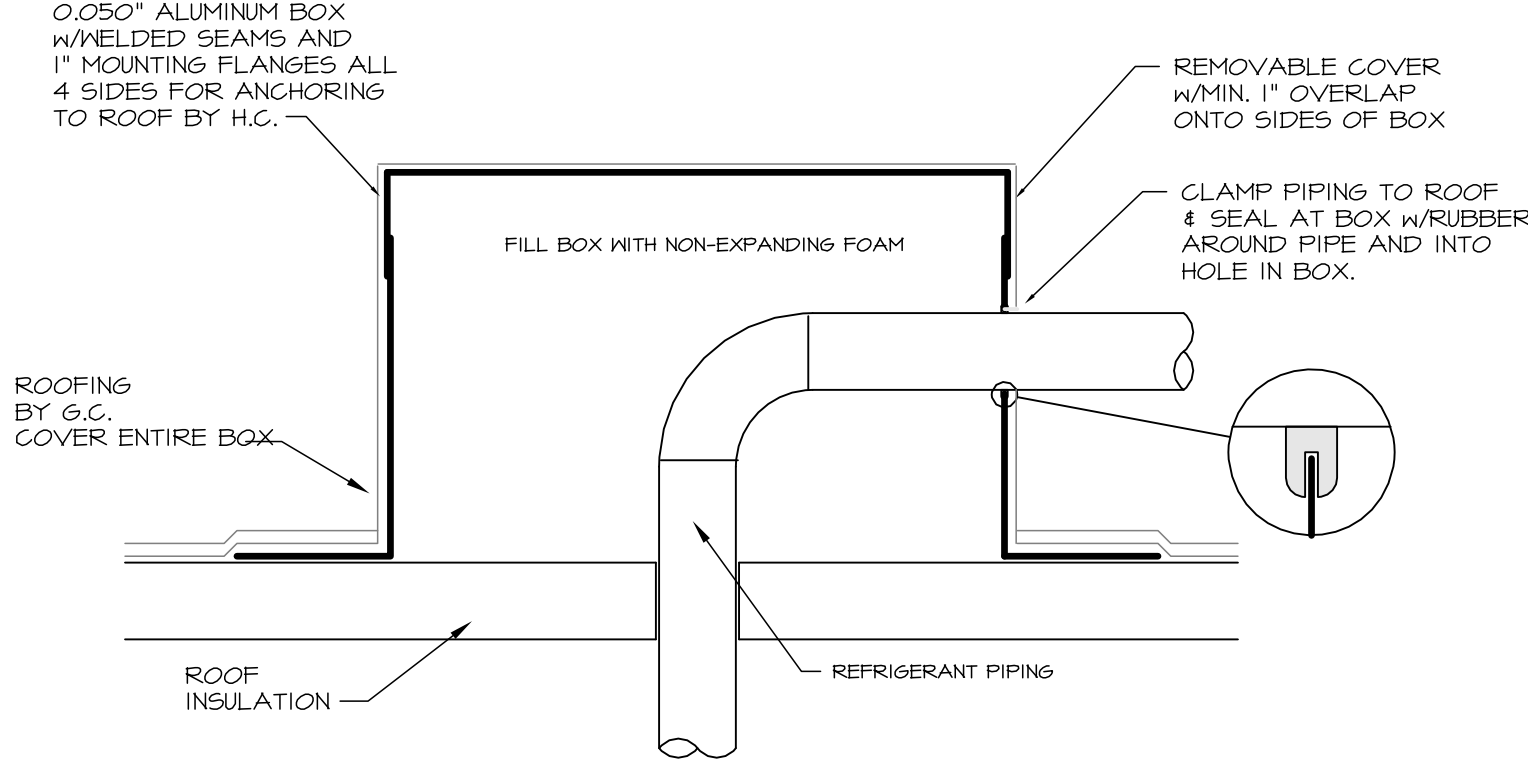
5 **EXHAUST FAN DETAIL**
NO SCALE



6 **COORDINATION SECTION**
NO SCALE



7 **REMOTE DAMPER CONNECTION DETAIL**
NO SCALE



8 **PIPING THROUGH ROOF**
NO SCALE



Prepared For:
118 on Munjoy Hill, LLC
118 CONGRESS STREET
PORTLAND, ME 04101

Consulting Engineer:
MECHANICAL SYSTEMS ENGINEERS
UNIT #10
ROYAL RIVER CENTER, 600 S. YACONUT ST., PORTLAND, ME 04101
TEL: (207) 772-4056
FAX: (207) 772-6022
© COPYRIGHT 2014

Architect:
ARCHETYPE architects
48 Union Wharf Portland, Maine 04101
(207) 772-6022 Fax (207) 772-4056

Project:
118 ON MUNJOY HILL
118 CONGRESS STREET
PORTLAND, MAINE

Revisions:
100% CONSTRUCTION DOCUMENTS

Date: 24 FEB 2014
Scale: NO SCALE
MECHANICAL DUCT DETAILS

M11
USE PROJECT 1332